

FROM THE PRINCIPAL'S DESK



*"Hope" is the thing with feathers –
That perches in the soul –
And sings the tune without the words –
And never stops – at all –*

- Emily Dickinson

Kia ora e te whānau

We had a beautiful Harvest Celebration with songs and communal dancing, as well as Mahana's lovely little market afterwards. It was heartwarming to see the community come together in this way and enjoy some down time with family and friends around the abundant harvest from the school orchard and the plentiful donations from families' orchards and gardens. Thank you, Blessing for all your hard work and for organising it.

In the last few weeks of term, the teachers have been conducting some assessments in their classes. These results will go to SEANZ (Steiner Education Aotearoa NZ) who will compile the NAPS (National Assessment Project) for feedback to the Ministry of Education. The NAPS compare our results with the other Steiner schools in the country as well as with national standards. In this way, we get a very good idea of how we are doing, and which next steps need to be implemented.

Yesterday, we celebrated Easter with the children. I told an Easter story, and we sang some Easter songs, after which we toured the various classrooms to see the exhibitions of their beautiful Easter crafts. This was followed by a feast of delicious hot cross buns and grape juice. When no one was looking, the Easter hare also delivered some treats!

Please remember that next term children should come to school with closed shoes to keep their feet warm when they play outside. Coming to school punctually for the start of the school day at 9:00 will remain a priority, and we will continue to monitor lateness and school attendance.

We wish you all a lovely Easter holiday with your whānau and look forward to welcoming you back for the winter term.

Ko te kai a te Rangatira he kōrero

Ngā mihi

Elizabeth



Attendance Matters



Term 1 and 2

Click [here](#) to view full calendar online

Friday 11 April	ToD/Last day of term 1	No School
Monday 28 April	First day Term 2	
Tuesday 13 May	Board Meeting	5pm
Monday 26 May	Community Meeting	7pm
Monday 2 June	King's Birthday	No School
Tuesday 3 June	Teacher Only Day	No School

CLASSROOM CORNER

PUTIPUTI (CLASS 1 AND 2)

This term has seen the classes become fully integrated and working well together. We've practised both lowercase and uppercase letters, their formations, sounds, and how to make words and short sentences using them. We've also engaged in counting activities, explored the quality of numbers 1 to 12, and met the four gnomes of Numberland, who helped us with our sums.

In addition, we spent time with Jolie in the garden, knitted snails and other animals with Davina, and enjoyed Bel A Vis. Our outdoor activities included cooperative games, skipping, obstacle courses, and relay races. We also had the opportunity to perform in assemblies, both for the school and parents, and created beautiful wet-on-wet paintings and crafts that captured the beauty of the changing seasons. It has been a busy and fun term in Putiputi, and we're now looking forward to celebrating Easter (Miss Terry says she has a lot of fun and exciting things planned) and going on holiday.

From our hearts to yours, wishing you all a wonderful and peaceful holiday!

Putiputi



SCHOOL BOARD



Kia ora e te whānau

The Board had its second meeting of term one on Tuesday 25 March.

Among other things the Board reviewed the responses to the recent Leadership and Capability survey and heard that some of you would like more information and clarity on the differing roles of the various Boards and Trusts, and how this links in with school management.

Broadly speaking:

- The Board of Trustees is responsible for oversight (governance) of the school's budget and implementation of the curriculum and is made up of volunteer parents alongside the Principal, a teacher representative (currently Yolande Terry) and a Board Secretary;
- School management is responsible for the day to day running (operations) of the school and this is led by the Principal;
- The Motueka Rudolph Steiner School Trust (MRSST) owns and manages the school's buildings, property and the farm and also is the governance body for the Kindergarten; and
- The Proprietors' Trust (PT) is responsible for the Special Character of the school, fundraising and the relationship with the Ministry of Education. MRSST and PT are also made up of volunteer parents.

If you're interested in volunteering for one of these various bodies please get in touch with bot.chair@motuekasteiner.school.nz or chair@mrsst.nz

The Board also welcomed two new representatives - Marie Allie and Isabel Challies - as well as thanking and farewelling Pippa Allen for her time on the Board.

The next Board meeting will be held on Tuesday 13 May at 5pm and members of the community can observe if they wish. If interested please contact the BoT chair in advance.

SCHOOL NOTICES

PROPRIETORS TRUST

Join Our School Fundraising Meeting!

Join us on **Thursday, 1st May at 3:15 PM** in the **Staff Room** as we brainstorm innovative ways to enhance our school's funding.

While the government funding supports the salaries of just four teachers, our unique Steiner education model requires a fifth teacher as well as teachers in handwork, outdoor classroom, and Farm to Table initiatives. Additionally, expanding our campus facilities is essential for growing our school roll, which in turn will qualify us for increased government funding. These facilities include, among others, an Admin Block, including an Office and Resource Room, and a Library. We need to come up with ways to get these funded.

This meeting will focus on developing creative fundraising strategies to support these crucial needs. We will discuss some new fundraising events coming up this year such as the 'Steiner Steps' fundraiser to be held in winter, and the art event at the end of the year, and would love your involvement.

Your ideas and enthusiasm are key to our success—come share your vision and learn how you can help sustain and enrich our educational environment!

Valetta on behalf of
Proprietor's Trust Fundraising Team

COMMUNITY CATCH UP

Come and join the end of term community catch up!
Today from 2:30pm in the Outdoor Kitchen

NEW INTERNATIONAL STUDENT



A warm WELCOME to our new International Student Family from Germany!

Katrin and Dominick Baier with **Alma**

are going to join us for 2 terms and are very much looking forward to their adventure.

The family has recently travelled Aotearoa for 7 weeks; they have now settled in a lovely house at the beach in Trewavas Street.

Alma will join Blessing's class after the holidays. Lisa Algie and her family are the buddies.

Please welcome our visitors into our school community.

DO YOU HAVE SPARE TOWELS?

The school is looking for donations of old but clean towels in medium to small sizes. These are to be used for Handwork and Farm to Table. Your donations can be dropped off at the office. Thank you!

FAREWELL

This term we say good bye to:

Henriand Taavi from Kohatu

Florence from Putiputi

Leilani from Mahana

Moana from Ahi

Wishing them and their families all the best!



HARVEST FESTIVAL

Last week we welcomed parents and friends to celebrate the Autumn Harvest festival with us at school. It was a glorious sunny day, the festival table was resplendent with nature's bounty, the classes all performed poetry and songs they had been learning and the whole community danced a harvest dance.



Afterwards we enjoyed Mahana's Autumn Market, the culmination of their Trade and Money main lesson. Six stalls served up various delicious treats and each stall had chosen a charity to donate to—SPCA, Friends of Flora, Rescue Helicopter, and Animal Welfare Network. Many thanks for supporting their initiative!

EASTER FESTIVAL AND CRAFTS





CLASS 7 CAMP TO TINLINE



CLASS 5/6 CAMP ON CAMPUS



CELEBRATING EASTER WITH CHILDREN



What is most important for our children is not so much whether we follow a specific religion or not but that when we choose to celebrate a holiday, we authentically honour the festival by drawing on its values consciously.

Every year I ask myself once again (because sometimes our values change):

- Why do we as a family celebrate Easter?

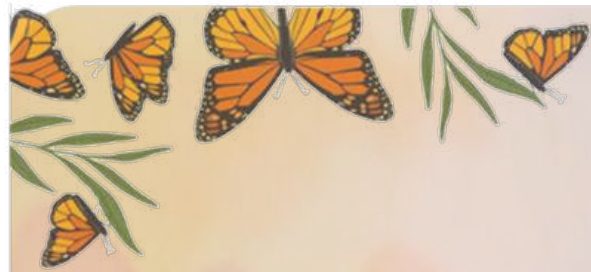
What is this tradition all about and what does it mean to us? It's so easy to get carried away with the material associations we have with the holidays that we sometimes forget to meditate on the underlying magic or spiritualism associated with them.

Here are a few of our personal Easter Traditions that I believe bring to life the values associated with this holiday:

- Planting bulbs (tulips, daffodils, hyacinths, freesias, anemones, and snowdrops) in the garden and watching them bloom in spring
- Creating an Easter Tree - blowing eggs, painting or dying them with watercolours and hanging them on a bare branch placed in a tall vase
- Adorning the Nature Table with Easter and autumn decorations such as bunnies, homemade candles, autumn leaves, and decorated eggs
- Choosing a toy with the children that is clean, undamaged and special to give to charity
- Telling an Easter story once a week for the few weeks leading up to Easter
- Having an egg hunt on Easter morning in the garden. The children discover many hard-boiled eggs that are dyed in secret. These are from the Easter Hare. At the end of their hunt, they usually find a small handmade felt toy or decoration and a small fair-trade chocolate egg in their tiny Easter baskets

Sharing a big family meal together, often hosting or visiting extended family and friends

<https://meaganrosewilson.com/2017/04/family-traditions-easter/>



KINDERGARTEN

At kindergarten, we've been watching little miracles and mysteries form before our eyes. Very hungry caterpillars have been munching their way through our swan plant leaves, then creating chrysalises as they prepare for their next stage of life. These quiet moments of transformation remind us that growth often happens in stillness. As we approach Easter and the autumn school holidays, we're reflecting on the beauty of slowing down, turning inward, and preparing for what's next. Just like the caterpillars, our tamariki are always growing - sometimes in ways we can't see right away.

This week we've been celebrating Easter gently and simply: baking hot cross buns, sharing stories, and noticing the changing season around us. The crisp morning air and golden leaves invite us to savour resting and enjoy being together. We wish our families a joyful Easter and a peaceful two weeks of the school holiday break, filled with warmth, wonder, and time to simply be.

Ngā mihi mahana from the kindergarten team



TERM DATES

28 April 1st day term 2

13 May 1:30-2:45: Hilda Mazza, anthroposophical nurse, parent workshop on Winter Wellness

2 June King's Birthday- no kindergarten

6 June Lantern Festival, evening time to be announced

13 June Lantern Festival rain date

20 June Matariki Holiday - no kindergarten

27 June last day term 2

COMMUNITY NOTICE BOARD

International Student Family Looking for Rental

Looking for rental

We are Kim & Moh, with Ari (10 years old) and Neas (8 years old). From January to December 2026, our children will be attending Motueka Steiner School as international students.

Kim has an artistic background and works as a makeup artist at our local theatre. Moh is a trained carpenter. He studied design and education and has been teaching arts and crafts at our local Steiner school for 10 years. We adults would like to use this sabbatical to recharge our batteries and find inspiration.

Therefore, we are currently looking for accommodation for this year. If you have an option, please let us know.

Best regards,
Kim & Moh

Contact:
0049 176
96539342
(WhatsApp, Signal,
Telegram)
moh@mailbox.org



Accommodation Wanted for Overseas Volunteer

We will be welcoming a volunteer from Germany on August 1, through an organization called Freunde Waldorf. We are looking for a host family who could provide comfortable accommodation as well as meals, in lieu of childcare and chores around the house. If you are able and willing to assist us in this regard, please contact Elizabeth or Yolande at the school. The volunteer will stay for 11 months.

Toy Library Garden Trail



Do you have a lovely garden and would like to participate in the Motueka Toy Library Garden Trail? We need gardens for our annual fundraiser, which will take place on the weekend of 15th and 16th November this year.

If you would like to know more and/or get involved please get in touch with Laura; 0272556599.

Garage Sale

Nora is having a 'Monster Garage Sale' at 5 School Road on May 5th from 1 to 5pm.

Help Keep our Kindergarten Sparking!

We are looking for a wonderful cleaner to care for our kindergarten space - someone who takes pride in their work and understands that a warm, tidy environment nurtures the wellbeing of our children and community.

The role is six hours per week:

- One hour each afternoon from Monday to Thursday
- Two hours on Friday afternoons

If you'd like to know more, please get in touch with Amy at the kindergarten on 03 528 6453 or email teamlead-er@mskindergarten.nz.

Violin and Viola Tuition

Violin and viola tuition available in Motueka with experienced teacher Jonna Arthur FTCL, LTCL, LRSM
Phone 021 276 0776.



Quality Ukelele for Sale



Quality ukulele for sale with leather strap and new tuner. Lovely sound. Mahalo brand; nearly new. \$40.00. Selling on behalf. Please contact Blessing on [bless- ing.biran@motuekasteiner.school.nz](mailto:ing.biran@motuekasteiner.school.nz), or come to the office.

Motueka Tennis Club

Term 2 Junior Coaching 2025

Juniors 5-8 years old - 30 April – 11 June (7 weeks)

3:15 – 4 pm Wednesdays

Juniors 9-11 years old - 30 April – 11 June (7 weeks)

4 – 5pm Wednesdays

Advanced Juniors (12 years +) - 2 May – 2 June (6 weeks)

3.45 – 5.15 pm Fridays (1.5 hour sessions)

Call Rita to register: 021 0250 1480

Email: rita.paczian@worldnet.co.nz

<https://clubspark.kiwi/MotuekaTennis>

or follow us on Facebook: [Motueka Tennis Club Group](https://www.facebook.com/MotuekaTennisClubGroup) | Facebook

A PROPRIETORS TRUST FUNDRAISER

We're putting the final touches on a fantastic Bookarama event this Sunday and can't wait to see you all there!

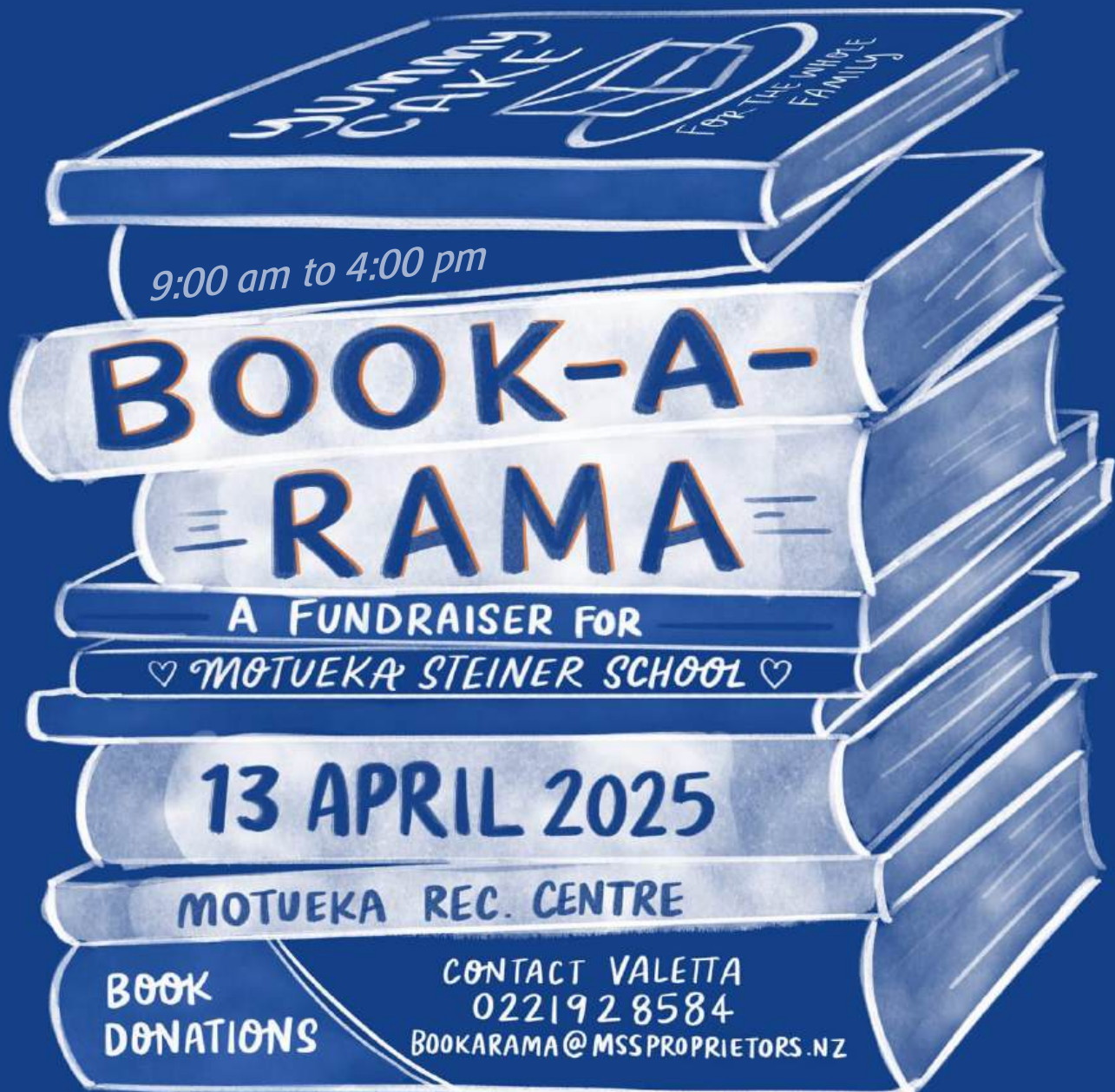
✦ We still need a bit of help with baking please. If you have a favourite cake, slice, or muffin recipe that's easy to whip up, we'd love for you to share your baking at our fundraiser.

A huge thank you to everyone who's already signed up to bring some delicious treats!

For baking drop-off details, please contact Anna at 022 095 7893.

Thanks so much for your support!

The Bookarama Team



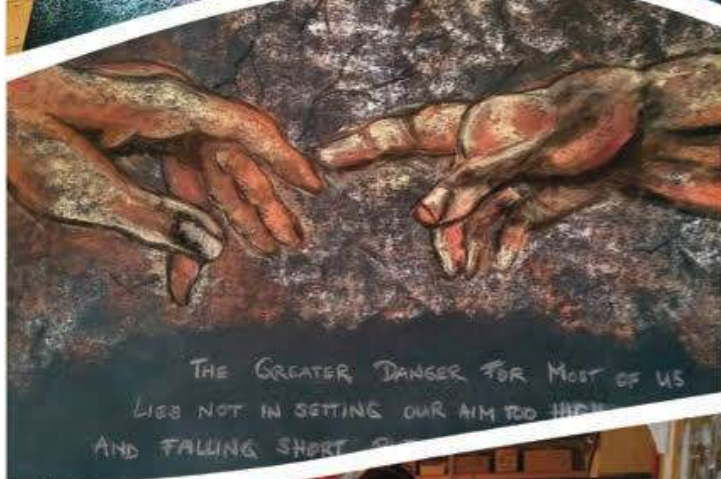


**TARUNA
COLLEGE**

Connect, Nourish, Sustain

Certificate in Rudolf Steiner Education

Discover the True Art of Teaching



Discover the true heart and art of teaching while undertaking a rich and exciting journey of personal and professional development.

The certificate is an introductory course to Rudolf Steiner Waldorf education. This part-time year-long programme gives a broad overview of the many-faceted dimensions of Waldorf pedagogy, curriculum and culture. Alongside lectures and workshops that will deepen and extend your understanding of child development and approaches to teaching and learning, you will have the opportunity to engage your creative side with many practical activities including arts, crafts, music and movement. Biography work, observation and reflective journalling recognise the importance of schooling and nourishing the inner life of the teacher.

The Certificate programme is designed for:

- Teachers new to Waldorf education who wish to extend their knowledge or to enliven and re-examine their classroom practice.

It also provides a helpful foundation for:

- Teacher aides in Steiner Waldorf schools
- Student teachers looking to teach in a Steiner Waldorf school
- Home-schooling parents or parents wishing to accompany their children's development and education in a Steiner Waldorf school.

Enrolments for 2025 seminars are now open:

Seminar One: 22-26 April

Seminar Two: 6-10 July

Seminar Three: 28 September - 2 October.

Cost: \$1250 per seminar (Early bird price of \$1150 per seminar when all three seminars are paid on enrolment at least one month prior to Seminar One)

Johnny Ryan and Lauren Hudson are Programme Directors for the CRSE.

For further information and inquiries please contact
info@taruna.ac.nz or see our website www.taruna.ac.nz
or call +64 6 8777174



April School Holidays Nature Sessions

Bushcraft, primitive skills, nature crafts,
sensory awareness and fun adventures.

5-12 year olds
9am-3pm,
15th Lower Mouere, 16th Kina Beach and
17th Native Skills, Lower Mouere
\$55 per day.

Website: Innatureeducation.com
Facebook: In Nature Education
Email: naturenuturenz@gmail.com




Yikes Tasman
358 Lower Queen St
Richmond

AUTUMN HOLIDAY PROGRAMME

Wk 1 Monday 14th to Thursday 17th April
Wk 2 Tuesday 22nd to Thursday 24th April

OUR PROGRAM:

- ✓ Birding, Bushcraft, Binoculars
- ✓ Local cinema
- ✓ Rock "therapy"
- ✓ and more.....

WWW.YIKESNELSON.COM/SCHEDULE





KIDZ KLUB AFTER 3 Amazing Autumn holiday programme

14th of April- 24th of April 2025


8.30am - 3.30pm
(aftercare may be available to 4:30pm
depending on numbers)
LOWER MOUTERE SCHOOL HALL

\$45 per day
WINZ OSCAR Subsidies available to eligible families



To get an enrolment form for your children contact
Leah Bailey-Young 027 512 0687
Kidzklubafter3@gmail.com

BE IN QUICK AS SPACES ARE STRICTLY LIMITED!!!

Monday 14 th April	Tuesday 15 th April	Wednesday 16 th	Thursday 17 th April	Friday 18 th April
The world is your oyster You can do anything you wish, what will it be? 	Autumn Crafts The leaves are falling, let's get creative 	Canival Day Our famous circus is back in town! 	Easter Extravaganza One word.... CHOCOLATE! 	GOOD FRIDAY <u>NO PROGRAMME TODAY</u> HAPPY EASTER
Monday 21 st April	Tuesday 22 nd April	Wednesday 23 rd	Thursday 24 th April	Friday 25 th April
EASTER MONDAY <u>NO PROGRAMME TODAY</u> 	Pet Toys Let's make our pet's something to play with 	Wheels Day Bring along your favourite wheels and have some fun! 	The Great Auction Going once, going twice, SOLD! 	ANZAC DAY <u>NO PROGRAMME TODAY</u> 

SEEN

PROMOTED BY LAUREN OAKLEY

Date: Tue, May 6, 2025 10:00AM

Where: State Motueka
Old Wharf Road, Motueka, Nelson, 7120,, New Zealand

Join us for this very special one off screening of this powerful documentary

Tickets:

General Admission: \$18.00

Additional booking fee of \$1.50 per ticket.

(Includes all applicable taxes)

<https://tickets.demand.film/>



Atamai Heritage Orchard

Providing fresh, local, tree-ripened fruit
grown using organic practices

Atamai Heritage Orchard, nestled in the Motueka Valley on Mytton Heights Road, cultivates a diverse mix of heritage fruit varieties. Our high organic matter soil, enhanced with organic fertilisers, produces fruit that is nutrient-dense and delicious.

You can buy directly from our fruit stall on Mytton Heights Road or by contacting: atamai.contact@gmail.com



Weekend Bus Services

Affordable and accessible public transport provided by the Nelson Tasman Community Transport Trust with a team of friendly volunteer drivers
Plus we carry your bike if booked

SATURDAY		SUNDAY	
Motueka to Richmond		Motueka to Richmond	
Departing	Route Stops	Departing	Route Stops
9:30 AM	Motueka isite / Library	1:00 PM	Motueka isite / Library
9:45 AM	Tasman Store	1:15 PM	Tasman Store
9:55 AM	Mapua Community Centre	1:25 PM	Mapua Community Centre
10:05 AM	Westdale Road	1:35 PM	Westdale Road
10:10 AM	Bateup/Wensley Road	1:40 PM	Bateup/Wensley Road
10:25 AM	Richmond Mall / E-bus Interchange	1:55 PM	Richmond Mall / E-bus Interchange
10:30 AM	Richmond Aquatic Centre	2:00 PM	Richmond Aquatic Centre
Richmond to Motueka		Richmond to Motueka	
1:45 PM	Richmond Aquatic Centre (if booked)	4:45 PM	Richmond Aquatic Centre (if booked)
2:00 PM	Richmond Mall / E-bus Interchange	5:00 PM	Richmond Mall / E-bus Interchange
2:20 PM	Wensley/Bateup Road	5:20 PM	Wensley/Bateup Road
2:25 PM	Stringer Road	5:25 PM	Stringer Road
2:35 PM	Mapua Community Centre	5:35 PM	Mapua Community Centre
2:45 PM	Tasman Store	5:45 PM	Tasman Store
3:00 PM	Motueka isite / Library	6:00 PM	Motueka isite / Library

BOOK TO CONFIRM YOUR \$6 SEAT (AND BIKE) TODAY

PH: 03 528 6543



Nelson Tasman Community Transport Trust aims to create sustainable transport options for local communities and is supported by Tasman District Council and the Lotteries Commission
www.ntcctt.org.nz

Effective from 1 December 2024



For the busy
mums out there...

Little Bird has some good news to share with you all! We are now selling our organic sourdough bread directly from our pop-up store in the heart of Mapua.

If you are looking for a nutritious bread roll for your kids sandwich, or a gluten free healthy snack for their lunch box, come and check our range of goods

We are open on Fri/Sat 10am to 12pm
& Sunday 10am to 2pm.



14 Aranui Road
hello@littlebirdstore.co.nz